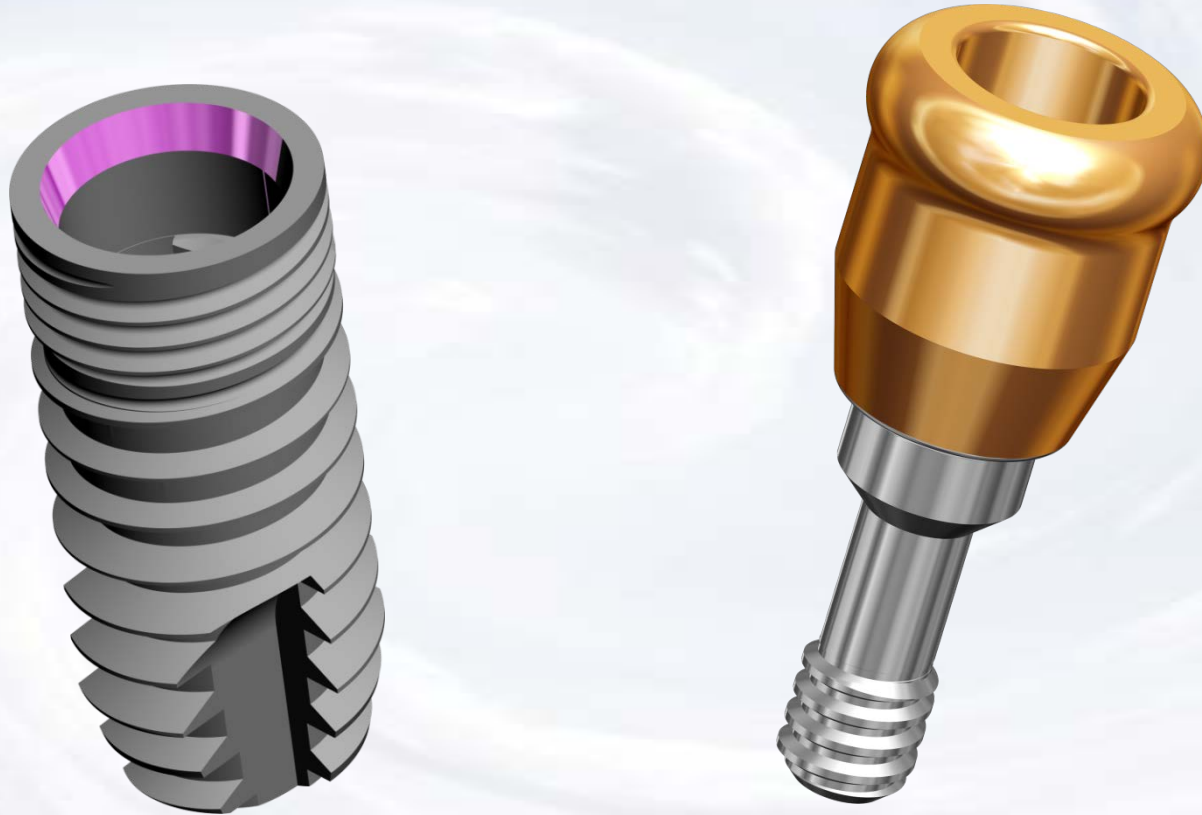


# **Overdenture Chairside Technique with Super Snap**



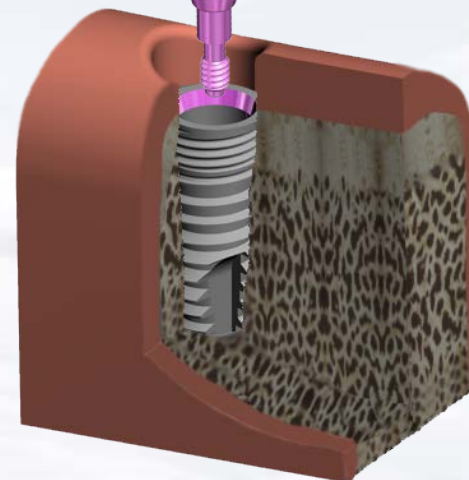
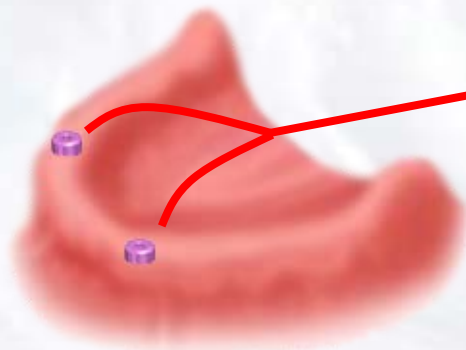
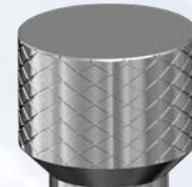
**Blue Sky Bio**

# Overdenture Chairside Technique with Super Snap

Assemble screw driver with  
Thumb Knob

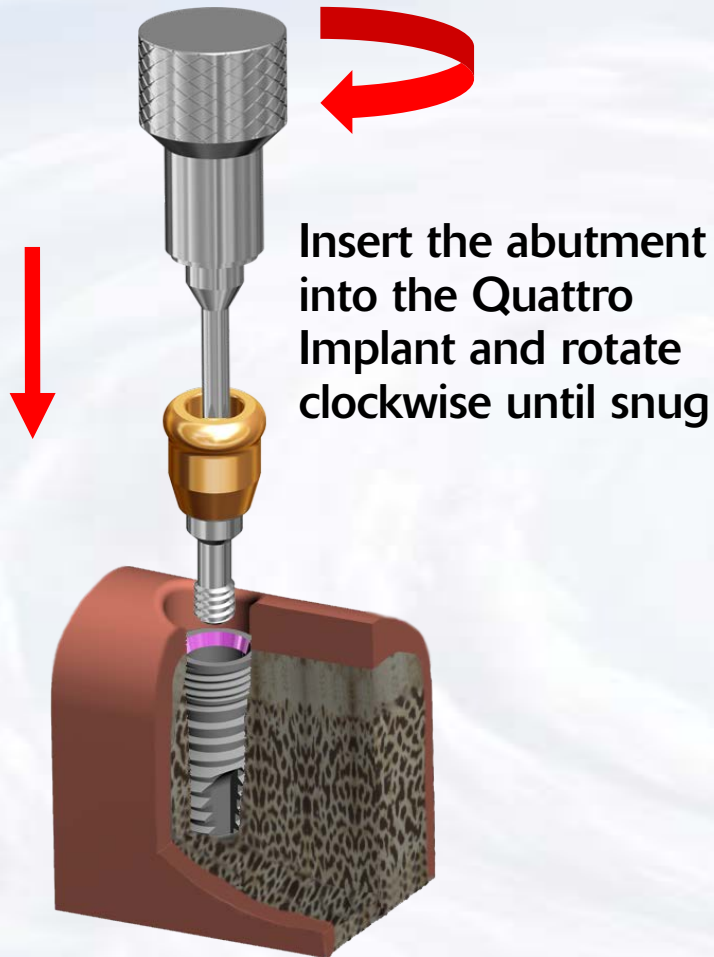


Remove healing abutment  
from implant



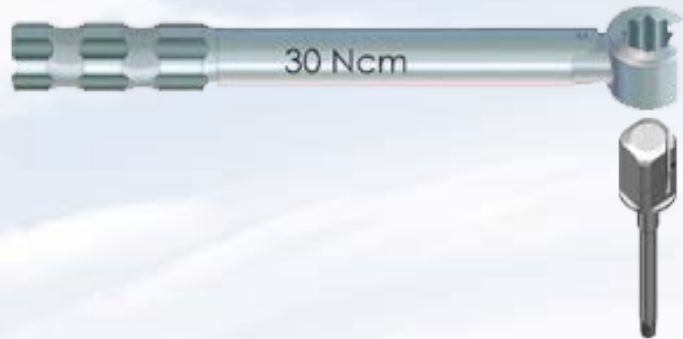
Blue Sky Bio

# Overdenture Chairside Technique with Super Snap



Blue Sky Bio

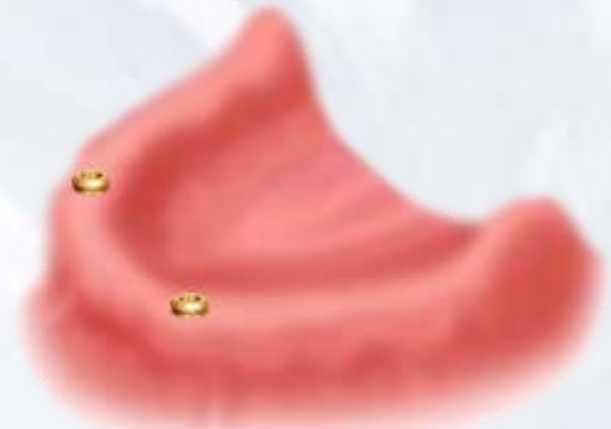
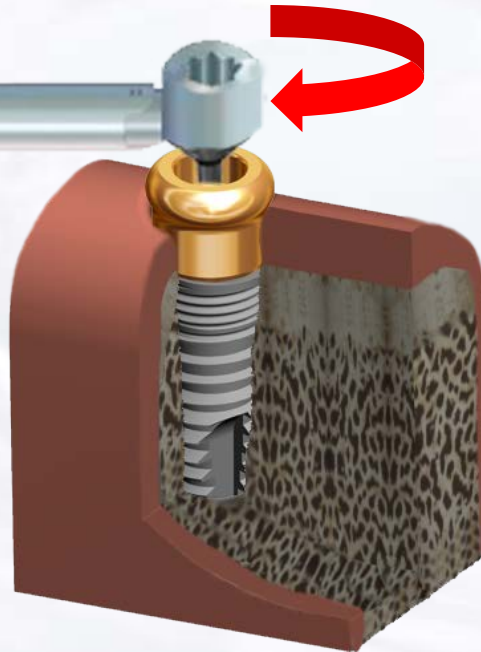
# Overdenture Chairside Technique with Super Snap



Insert the Hex Driver within the  
30Ncm torque ratchet



Insert driver into abutment  
and turn torque ratchet  
clockwise until torque of 30  
Ncm is reached and the head  
of the ratchet releases



Abutments in  
place

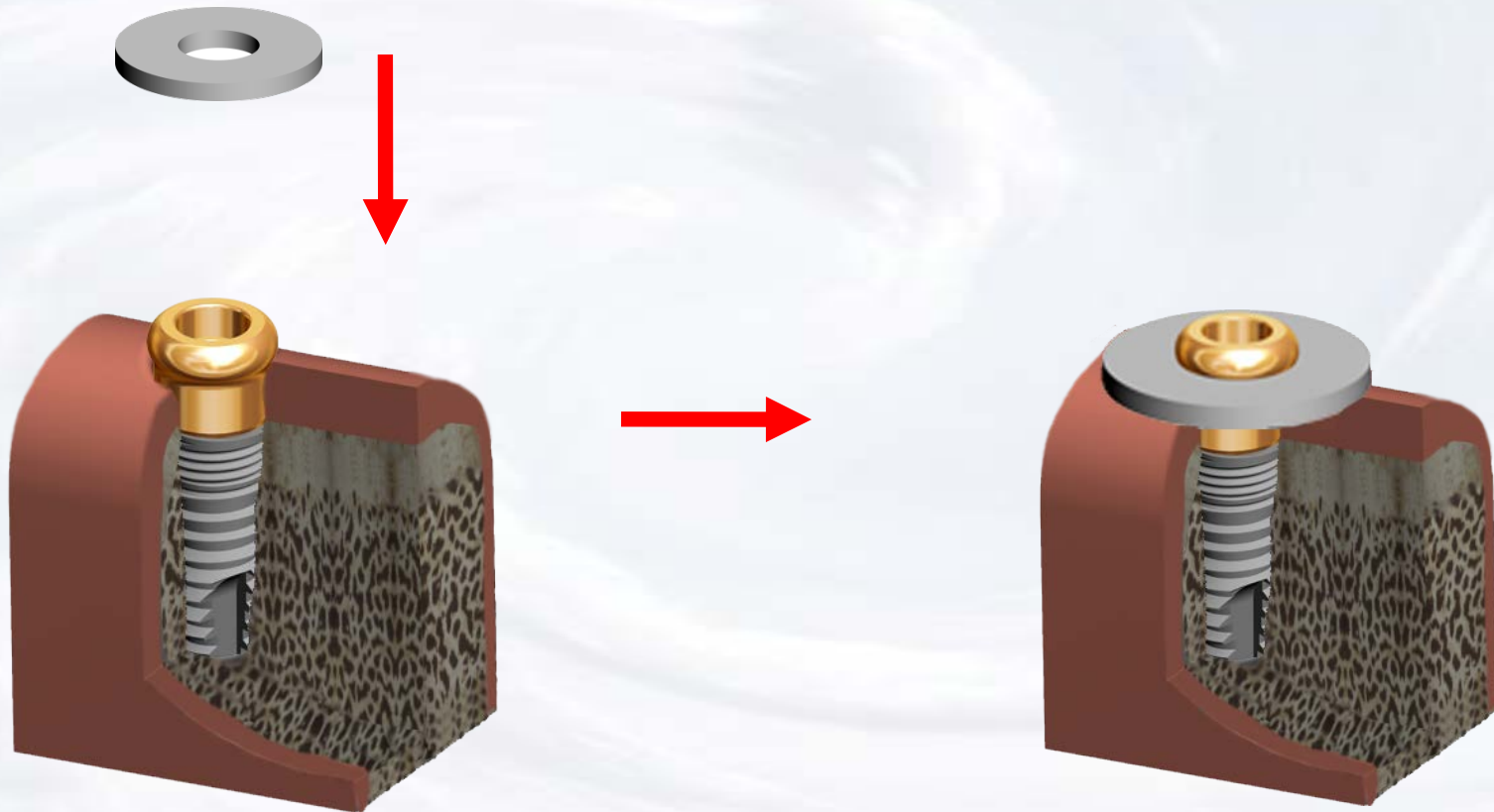


Blue Sky Bio



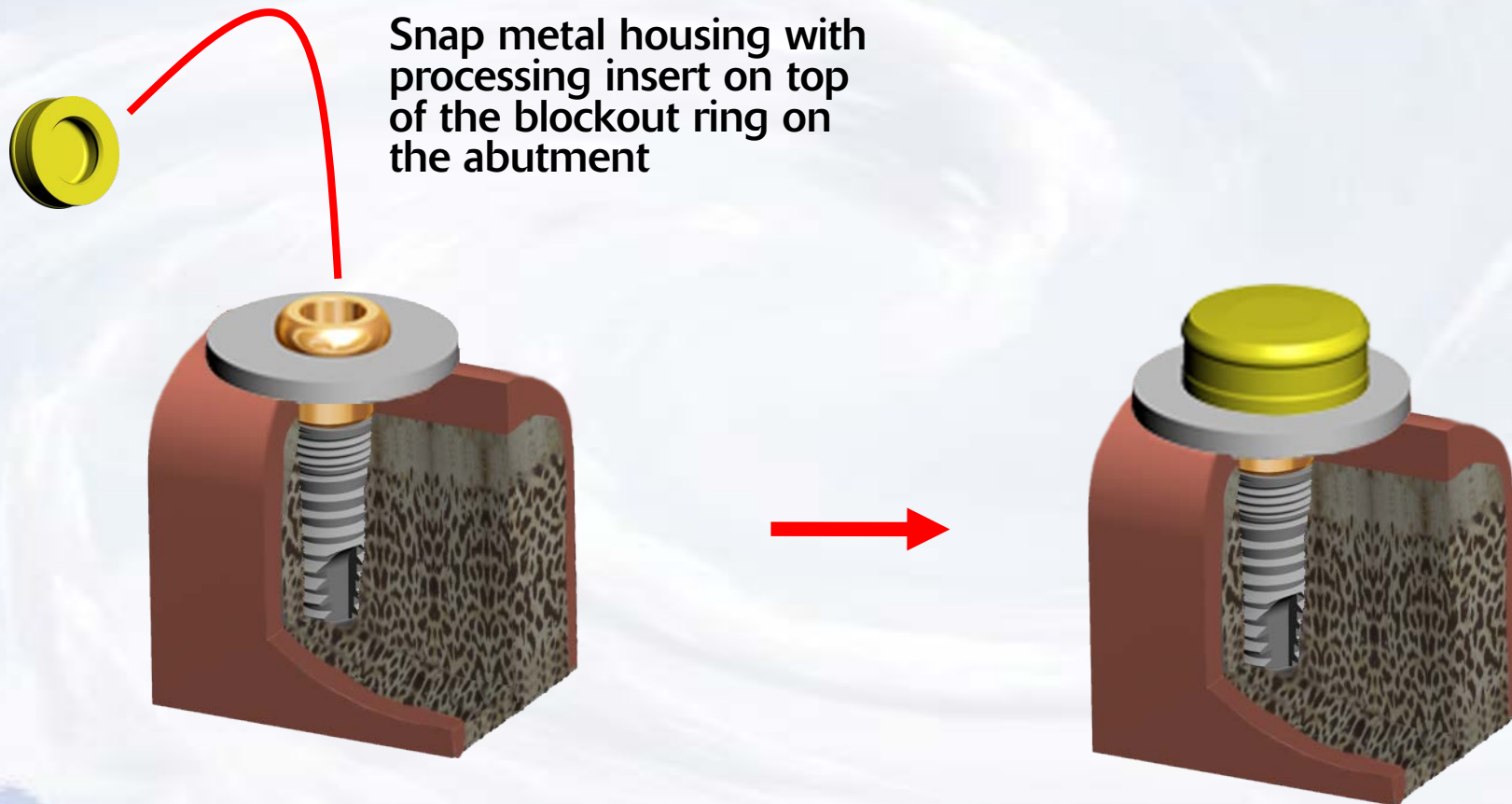
# Overdenture Chairside Technique with Super Snap

Put silicon blackout  
ring on the abutment



Blue Sky Bio

# Overdenture Chairside Technique with Super Snap



Blue Sky Bio

# Overdenture Chairside Technique with Super Snap



Remove enough material from the tissue side of the denture to ensure that it does not interfere with the housings. Typically it is necessary to make the cavity in the denture 2-3mm wider and 1-2mm taller than the housing



Insert denture and ensure that when it is fully seated it does not touch the housings



**Blue Sky Bio**

# Overdenture Chairside Technique with Super Snap



Insert resin of choice into the  
cavities in the denture



Insert denture again over  
the housings and with  
the patient occluding on  
the denture



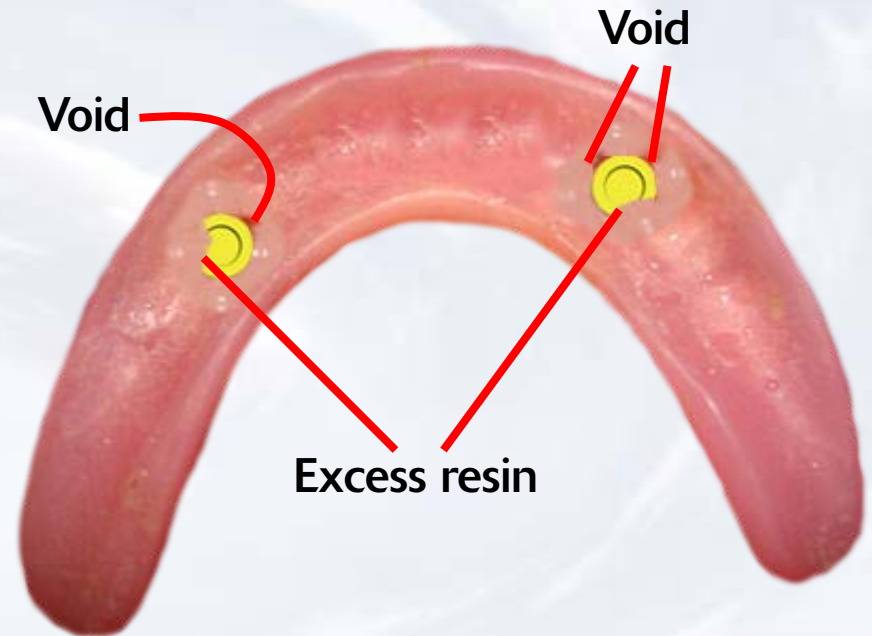
**Blue Sky Bio**



# Overdenture Chairside Technique with Super Snap



Let resin cure with denture in appropriate occlusion



Remove denture from mouth and fill any voids with resin.  
Trim any excess resin around the housing and on the ridge area



**Blue Sky Bio**

# Overdenture Chairside Technique with Super Snap

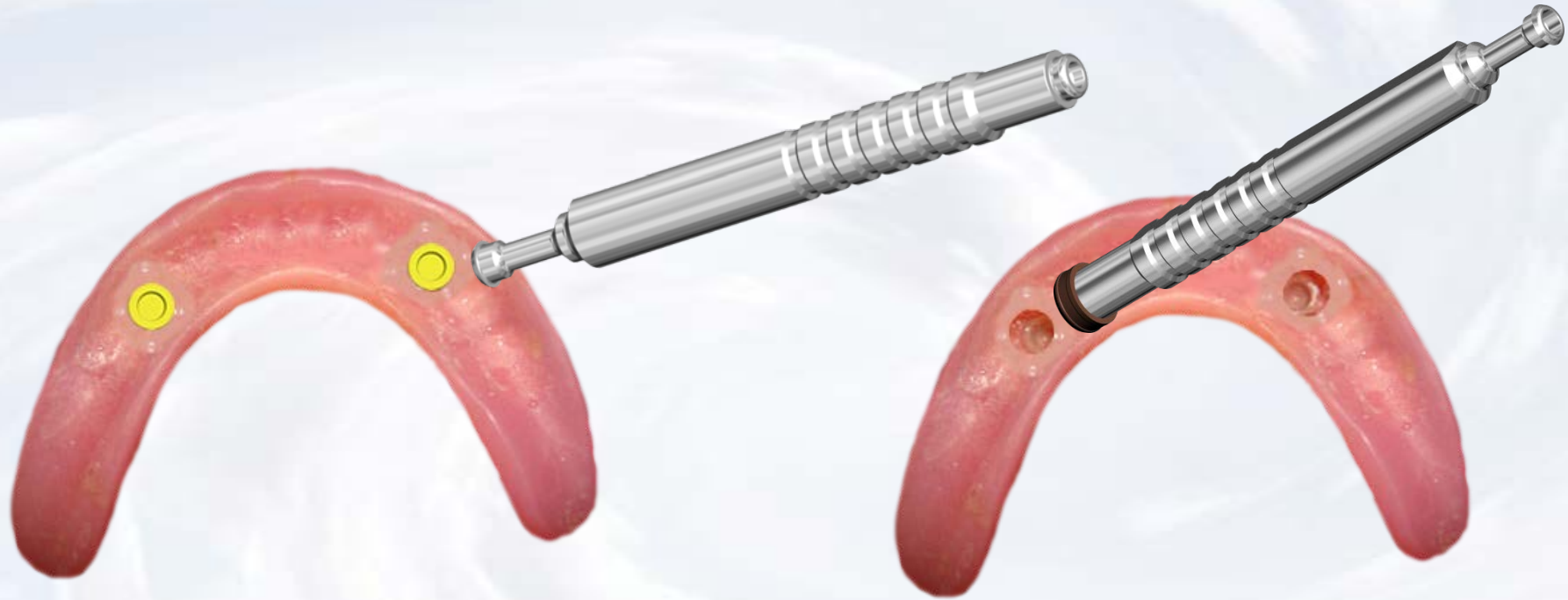


Finished prosthesis with  
inserts in place



**Blue Sky Bio**

# Overdenture Chairside Technique with Super Snap (Optional)



Remove the insert you want to change with the sharp point of the removal instrument

Place the insert with the desired retention into the denture with the opposite side of the removal instrument



**Blue Sky Bio**